

The presentation will begin shortly

VIRTUAL ASSESSMENT vs IN-HOME AUDIT



Hap Haven
PPL Pilot Manager



Nolan Alberti
Marketing Manager

CHOOSING THE RIGHT ENERGY AUDIT



Thank you for coming today. Remember, this is an overview!

An overview for each of the topics below.

- **What is Building Science** and why is it so important?
- **Virtual Assessment vs In-Home Energy Audit** - which is best for you?

What is the PPL Residential Energy Efficiency program? Incentives?

Q and A at the end – please type into the box
No need to take notes – we'll send you the PDF

BUT FIRST:



What webinars do you want PPL Electric to offer in 2026?

Next year we will be scheduling 8 webinars:

January and February,
April and May,
July and August,
September and October.

AN OVERVIEW - OF HOW A HOUSE WORKS

What is Building Science?

This is the science specific to your home systems and how they interact. This includes how heat, air and moisture move.

What are the Home Systems?

They are all the individual components grouped by the job they do.

[Structural system](#), [Electrical system](#), [Plumbing system](#) and [Mechanical system](#)

What Home Performance?

This is the process of making a home more comfortable, energy efficient, safer, healthier and more durable by improving all home systems and their interactions.



What's the difference between a virtual home assessment and an in-home energy audit?

It's the difference between visiting a doctor in the office and making a Teladoc phone call.

Both have value. Both can solve your home's problem.

VIRTUAL ASSESSMENT + A HOUSE DOCTOR

This relies on your ability to describe the problem on the phone.
It's a preliminary consultation to focus your thinking.

IN-HOME AUDIT + A HOUSE DOCTOR

A face-to-face conversation plus
Hands-on measurement of your mechanical and structural systems

BUT FIRST – SOMETHING FOR YOU TO DO



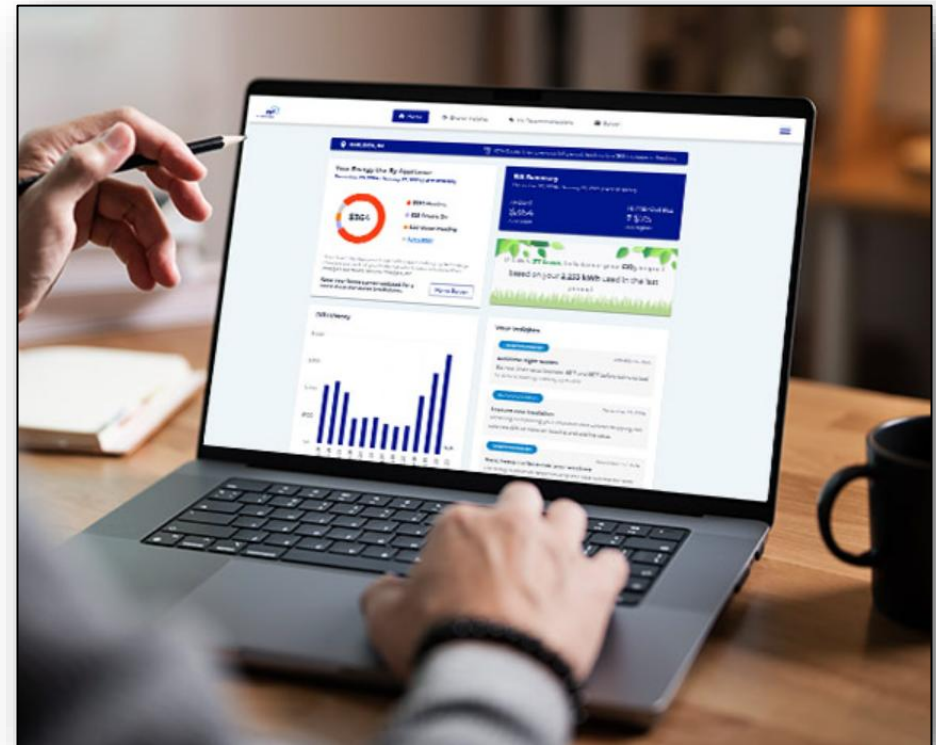
The ENERGY ANALYZER is the PPL online tool for you to understand how your electric appliances use energy.

It's helpful for you to use the Energy Analyzer before you do an assessment or audit.

This new tool shows you when, where and how your home uses energy by appliance type.

Open your online bill and select the Analyzer Energy Usage button.

Answer the Home Survey questions to help the Analyzer give you more accurate recommendations.



DIFFERENT SOLUTIONS FOR YOU

Energy Analyzer - can help you learn about where you are using the most electricity.

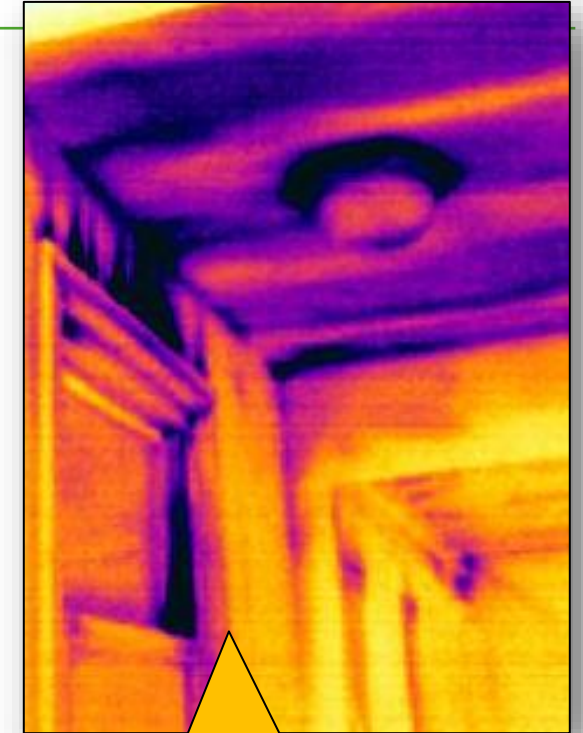
Virtual Assessments - can help you understand more obvious problems:

- Broken heaters, AC
- Kitchens over vented crawlspaces
- Broken windows, etc. . .

In-Home Auditing - is a deep-dive to find hidden problems and show you a solution.



No problems here.



Infrared shows you the problem

VIRTUAL ENERGY ASSESSMENTS



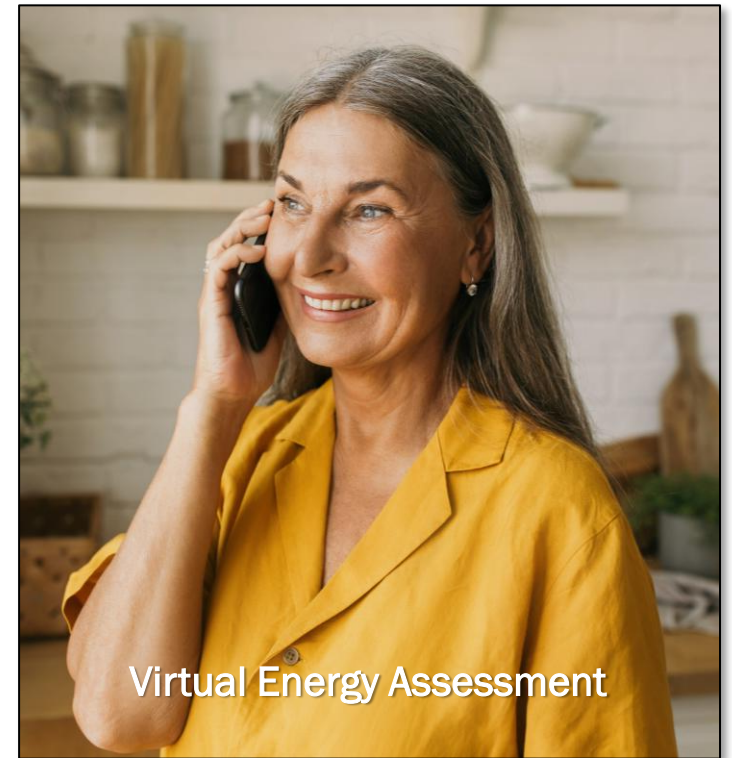
Phone-based review of issues you have found at home

Your choice:

A voice or video call with an Energy Advisor

FREE for electric heating or central air customers and comes with a free energy savings kit mailed to your home.

Call 877-486-9204 to schedule



IN-HOME ENERGY AUDIT

Detailed home walk-through

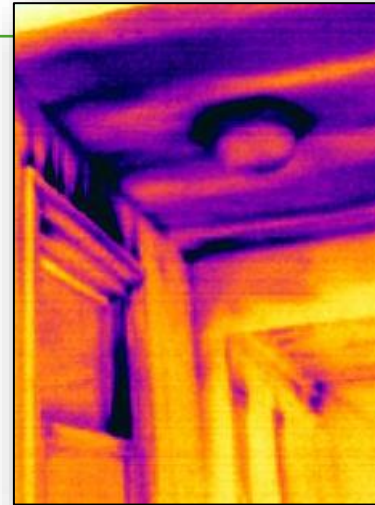
Most in-home audits are free if you assign the rebate to the contractor. Check with your independent auditor if the assessment is free before you schedule an appointment.

\$350 rebate for electric heating and central AC customers

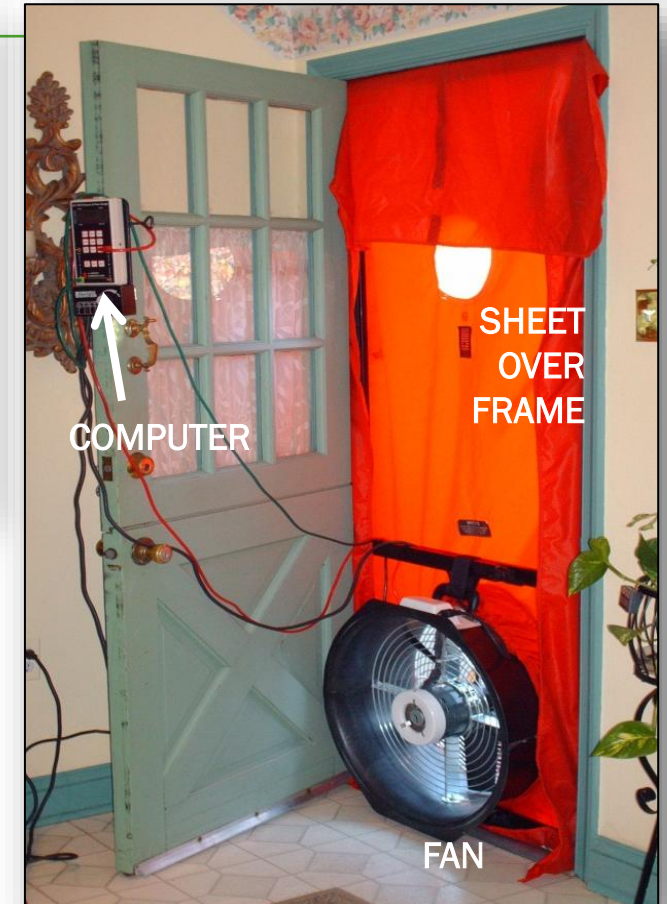
\$200 rebate for electric heating or central AC customers

Search for contractors on our website

<https://www.pplelectricsavings.com//ppl/homeequipment/contractor/>



Infrared Image



Blower Door set-up

OTHER ENERGY AUDITING TOOLS

Different tools tell different stories

Tools can “illuminate” a problem

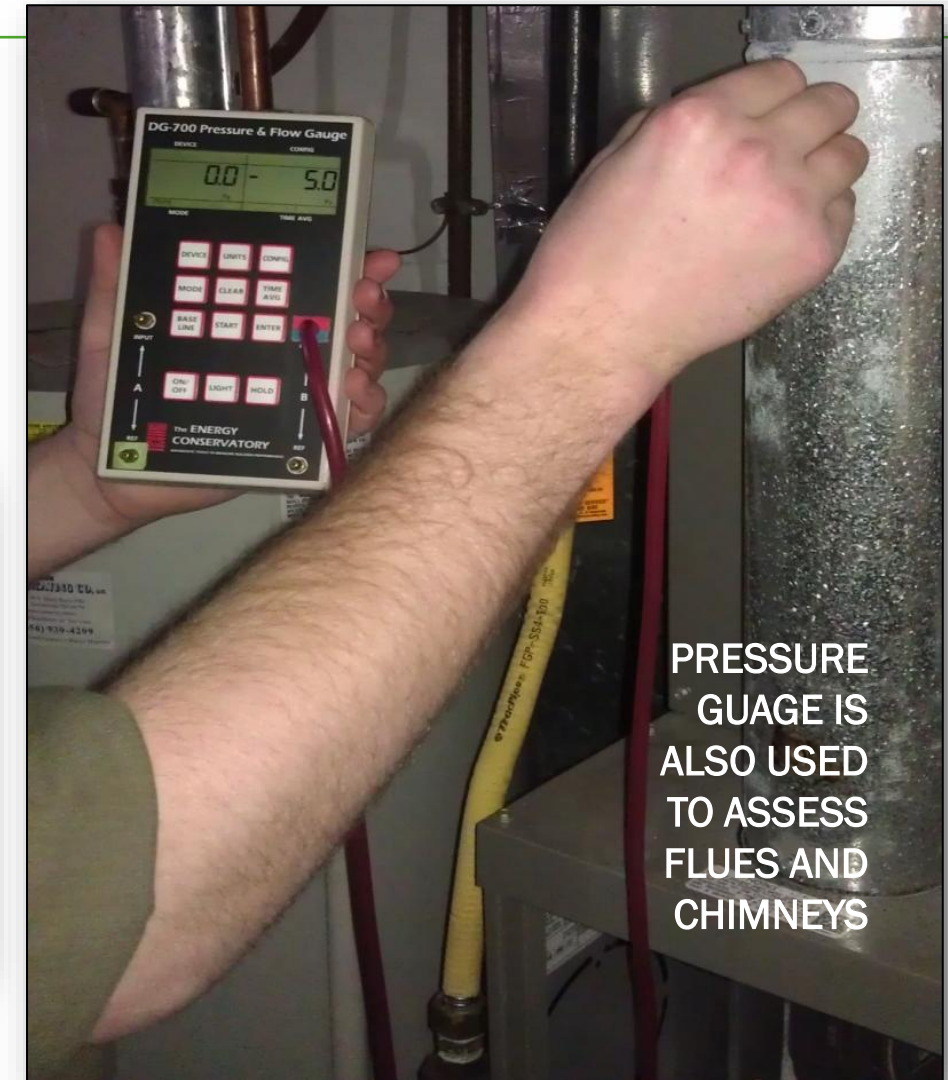
Combustion analyzer to assess the health of your heater



Smoke “pencil” to assess heater draft or air leaks around the house.



Moisture meter to analyze the source of water vapor or if wood is likely to rot.



PRESSURE GAUGE IS ALSO USED TO ASSESS FLUES AND CHIMNEYS

LET'S LOOK AT AN EXAMPLE

What's the problem?

Look at the roof.



MULTIPLE SYSTEMS ARE FAILING



SHELL - The attic isn't air sealed or insulated well.
HVAC - The ducts aren't sealed or insulated well.

TOOLS CAN GIVE YOU ANSWERS

This chimney is spilling combustion gasses. It may be:

- Designed incorrectly,
- Blocked or
- House fans might be out-competing the flue. Pressure testing can “illuminate” the problem and suggest solutions.



Back-drafting water heater



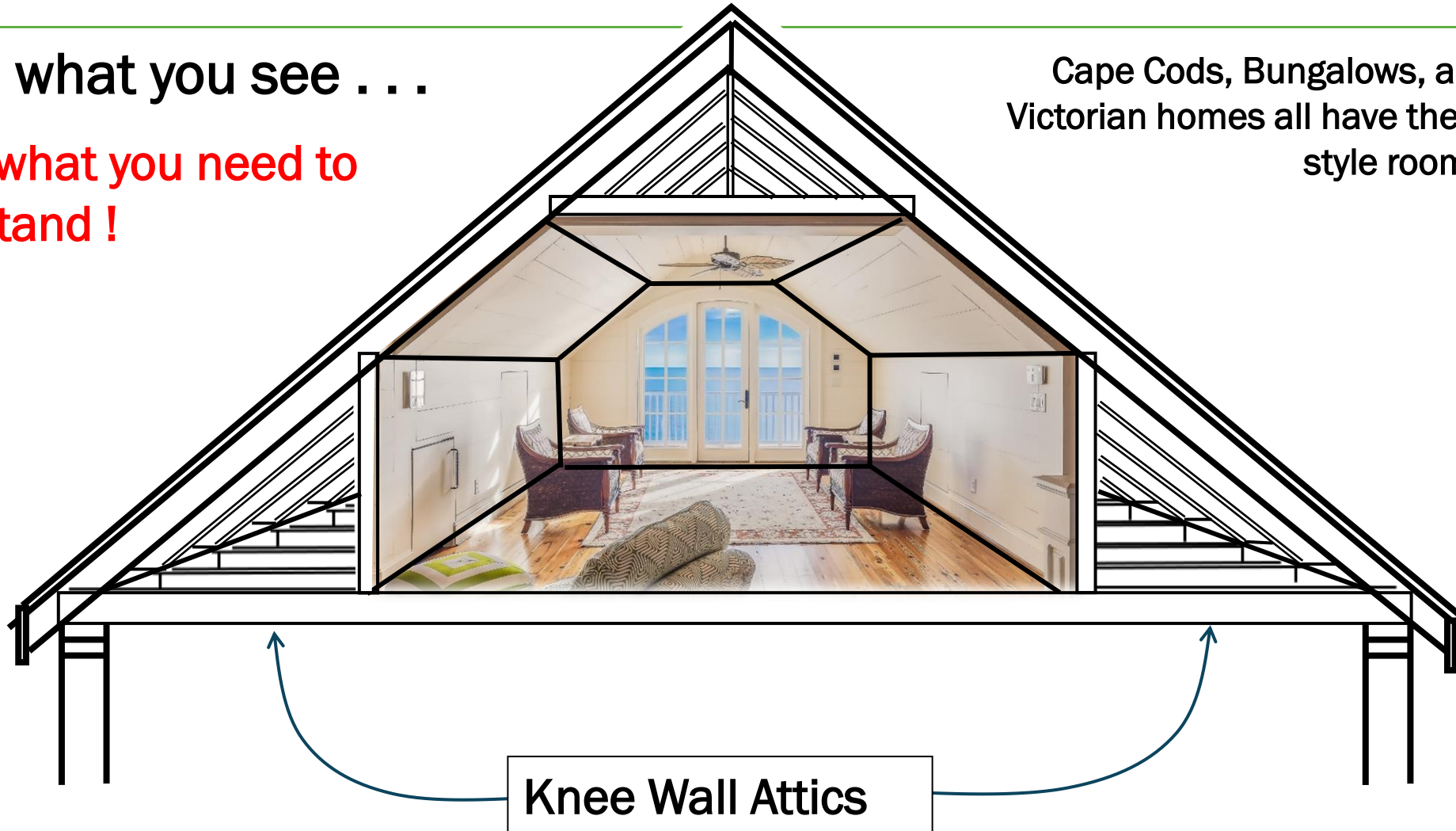
Caused by negative pressures in the kitchen

AUDITORS USE “X-RAY EYES”

This is what you see . . .

This is what you need to understand !

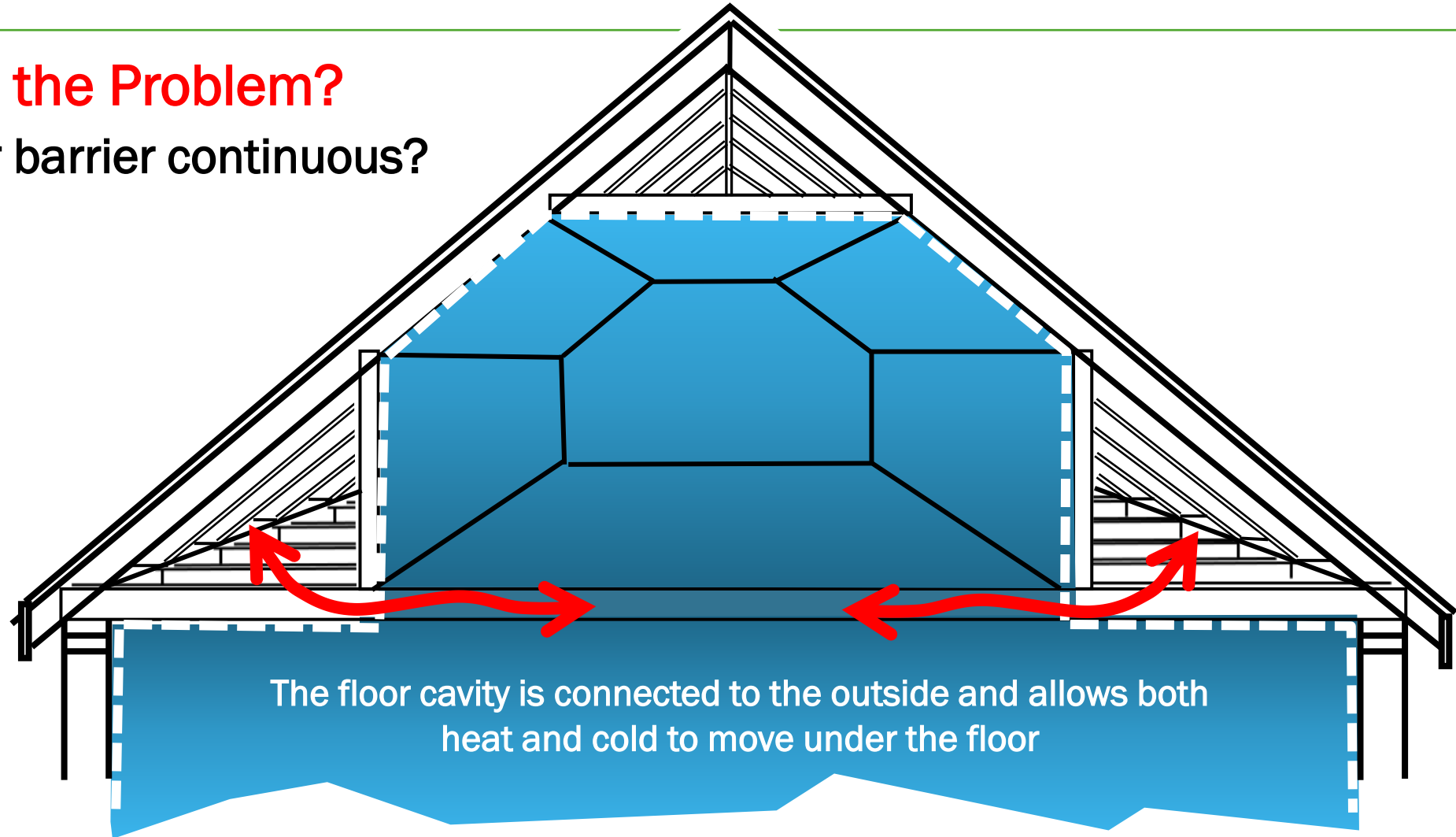
Cape Cods, Bungalows, and Victorian homes all have these style rooms.



THE BLUE IS CONDITIONED SPACE

What is the Problem?

Is the air barrier continuous?

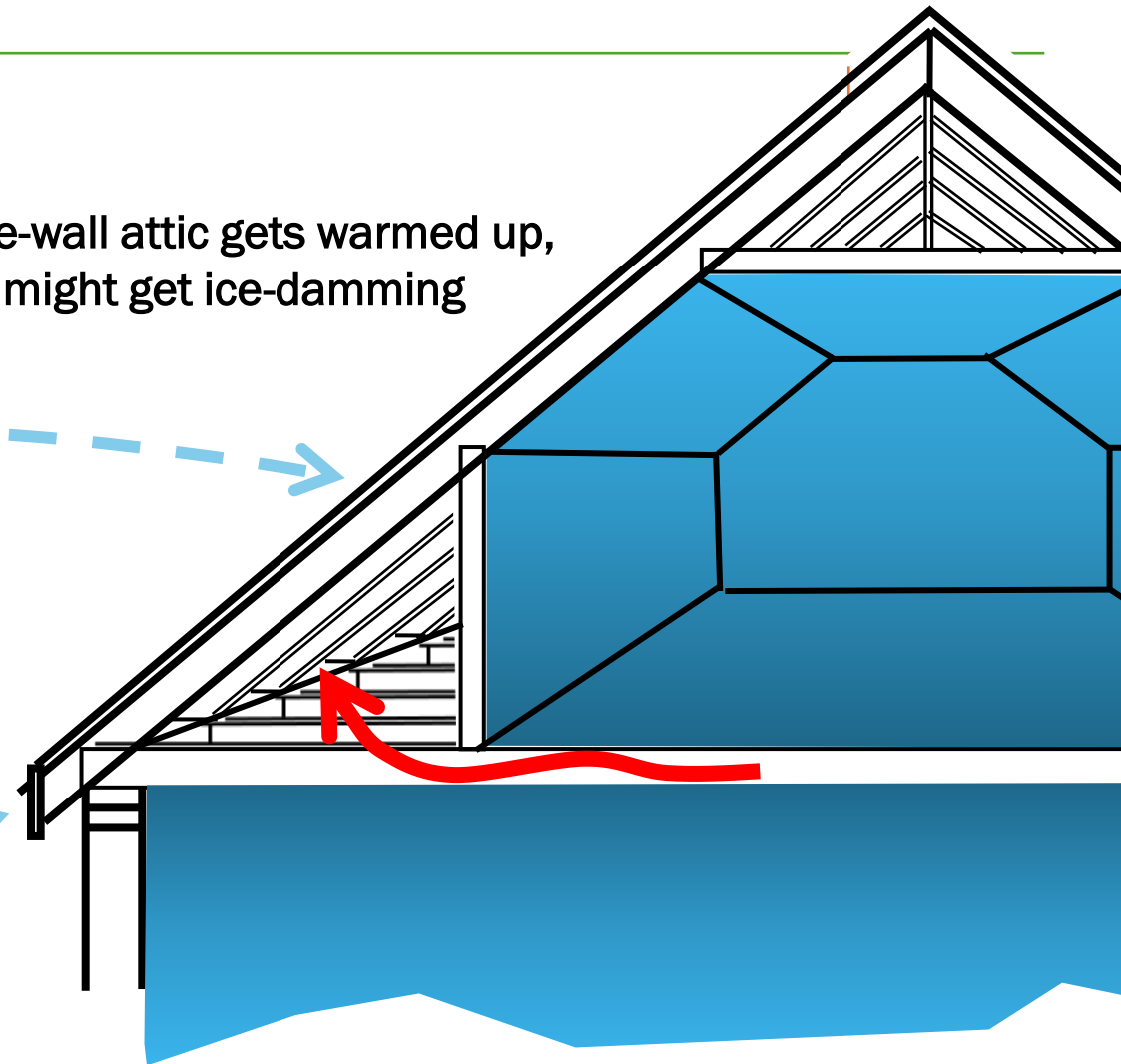


YOU SEE IT IN THE WINTER . . .

Warm air escapes into the knee-wall.



The knee-wall attic gets warmed up,
and you might get ice-damming



The Energy Analyzer

Is free with your online bill and can help you learn what questions to ask.

Virtual Assessments

Can help you understand more obvious problems by describing them to an Energy Advisor on the phone or video call. Free for electric heating or central air customers and comes with a free energy savings kit mailed to your home.

Call 877-486-9204 to schedule

In-Home Auditing

Is a deep-dive to find hidden problems and show you a solution.

\$350 rebate for electric heating and central AC customers

\$200 rebate for electric heating or central AC customers

Check with your independent auditor if the assessment is free before you schedule an appointment. <https://www.pplelectricsavings.com//ppl/homeequipment/contractor/>

PPL HOME REBATES



<https://www.pplelectric.com/rebates>

Single Weatherization Upgrades	Rebate	Notes	SHELL SYSTEM
Attic Insulation (electric heat)	\$500	75% of cost up to a max of \$500	
Attic Insulation (central A/C, non-electric heat)	\$200	75% of cost up to a max of \$200	
Basement Wall Insulation (electric heat)	\$500	75% of cost up to a max of \$500	
Basement Wall Insulation (central A/C, non-electric heat)	\$200	75% of cost up to a max of \$200	
Air Sealing	\$200	Air infiltration reduction (@ CFM50) x \$0.25 up to a max of \$200	

Single Efficient Equipment Upgrades	Rebate	Notes	MECHANICAL SYSTEM
Smart Thermostat (self-install)	\$50	ENERGY STAR® certified	
Smart Thermostat (professional install)	\$100	ENERGY STAR certified. Must be installed by a PPL Electric Utilities qualified contractor.	
Heat Pump Water Heater	\$400	Universal Energy Factor (UEF) ≥ 3.3	
Air Source Heat Pump	\$350	≥ 15.2 HSPF2, ≥ 11.7 EER2, ≥ 7.8 HSPF2	
Air Source Heat Pump	\$450	≥ 16.3 SEER2, ≥ 12.9 EER2, ≥ 8.2 HSPF2	
Ductless Mini-Split Heat Pump	\$400 (per outdoor unit)	≥ 15.2 SEER2, ≥ 11.7 EER2, ≥ 7.8 HSPF2	
Central Air Conditioner	\$200	≥ 15.2 SEER2, ≥ 12 EER2	
Central Air Conditioner	\$300	≥ 16.3 SEER2, ≥ 12.9 EER2	

Thermostats are not “major treatments” when it comes to rebate bundling – next slide.

PPL BONUS REBATES



Comprehensive Retrofit Bonus 1 (\$250)

(2 major treatments installed within 12 months) (1 weatherization upgrade + 1 major mechanical upgrade)

Comprehensive Retrofit Bonus 2 (+\$100 or \$350 total)

(3 major treatments installed within 12 months) (Bonus Tier 1 + 1 or more additional major upgrades)

Deep Energy Retrofit Bonus (\$500)

(In-Home energy audit + 3 treatments done on the same contract)

(At least 1 shell and 1 mechanical treatment)

(Cannot be used with Bonus 1 or 2)

DER Bonus webpage: <https://ppl electric.com/retrofit>

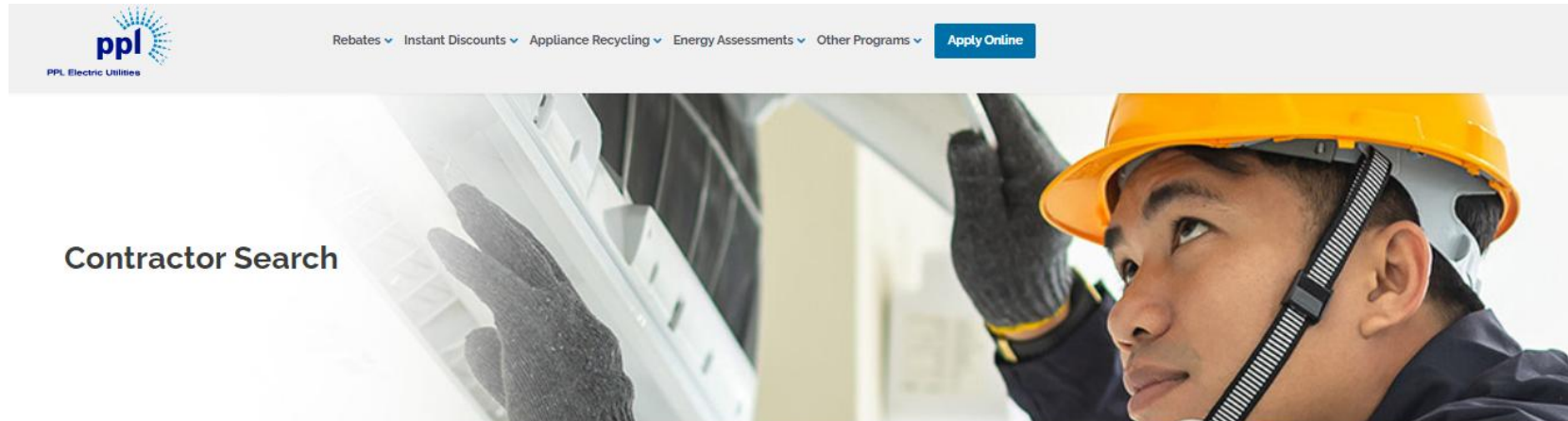
FIND A CONTRACTOR



Log onto the PPL Electric Utilities website

for more program information or to identify a Trade Ally you'd like to hire.

<https://www.pplelectricsavings.com//ppl/homeequipment/contractor/>



You can filter our Contractor Search page to find contractors who serve your county.

Contractors are not PPL Electric employees

FIND A CONTRACTOR



Log onto the PPL Electric Utilities website

for more program information or to identify a Trade Ally you'd like to hire.

<https://www.pplelectricsavings.com//ppl/homeequipment/contractor/>

You can filter to find all Energy Auditors that serve the program.
They all carry certifications from the Building Performance Institute (BPI).

There are only four In-Home Energy Auditors that will qualify you for the Deep Energy Retrofit BONUS rebate:

Advanced Efficiency Worx	support@aeWORXpa.com
Energy Services Group	info@energysvc.com
King Conservation	casey@kingconservationgroup.com
MT Weatherization	ACastles@tennygroup.com

LAST CALL FOR TAX CREDITS

Federal energy tax credits are stopping this year.

Your qualifying treatment must be installed and paid for this year to get a maximum of \$3,200 from two different “buckets”:

- 30% up to \$2,000 for higher performance mechanical improvements and
- 30% up to \$1,200 home improvements.
(This includes air sealing and insulation)

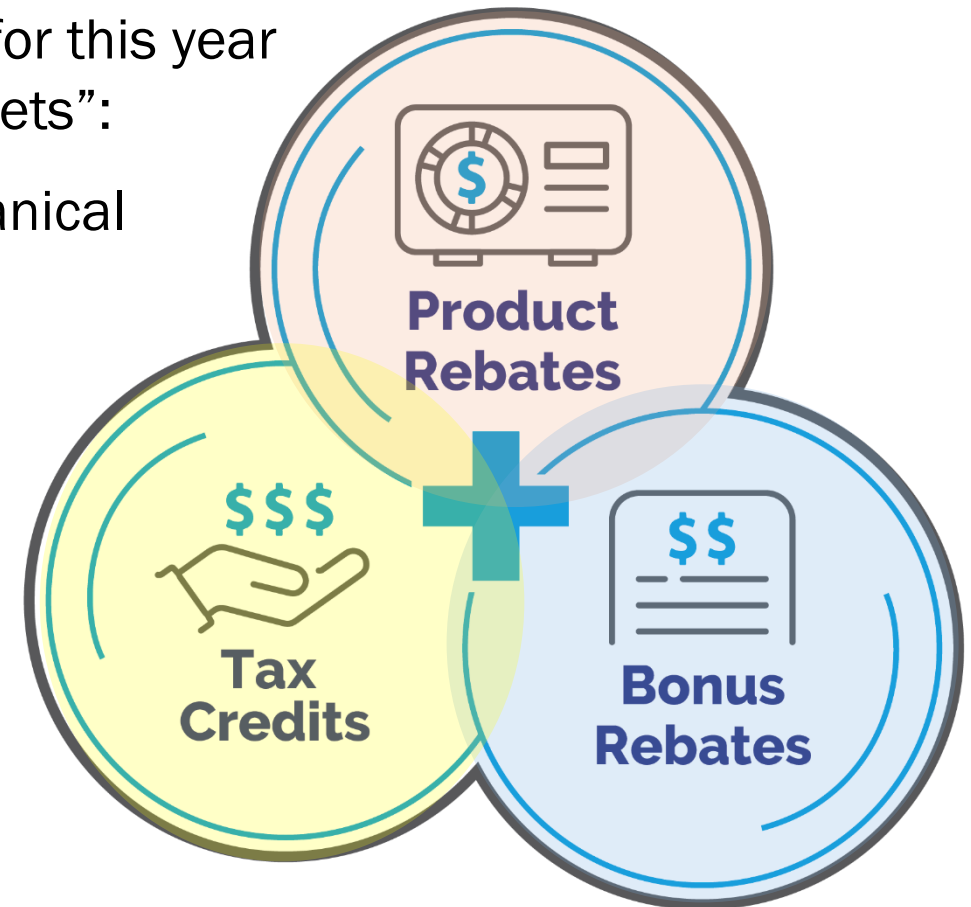
<https://www.EnergyStar.gov/about/federal-tax-credits>

Example if you bundle air sealing and insulation:

(Up to \$200 – PPL rebate for air sealing)

(75% up to \$1,000 – PPL rebates for basement and attic insulation if you have electric heat)

(30% of cost up to \$1,200 for federal tax credit)



QUESTIONS and COMMENTS ?



Please type them into the questions box

And don't forget to let us know what webinars you want to see in 2026?



Thank you for coming today

VIRTUAL ASSESSMENT vs IN-HOME AUDIT



Hap Haven
PPL Pilot Manager



Nolan Alberti
Marketing Manager